

Parent Survey

2006



**Boundary Bay
Montessori House**

Graph Legend



Strongly Agree / Very Powerful



Agree / Quite Powerful



Neutral / Somewhat Powerful



Disagree / Slightly Powerful



Strongly Disagree / Not Powerful



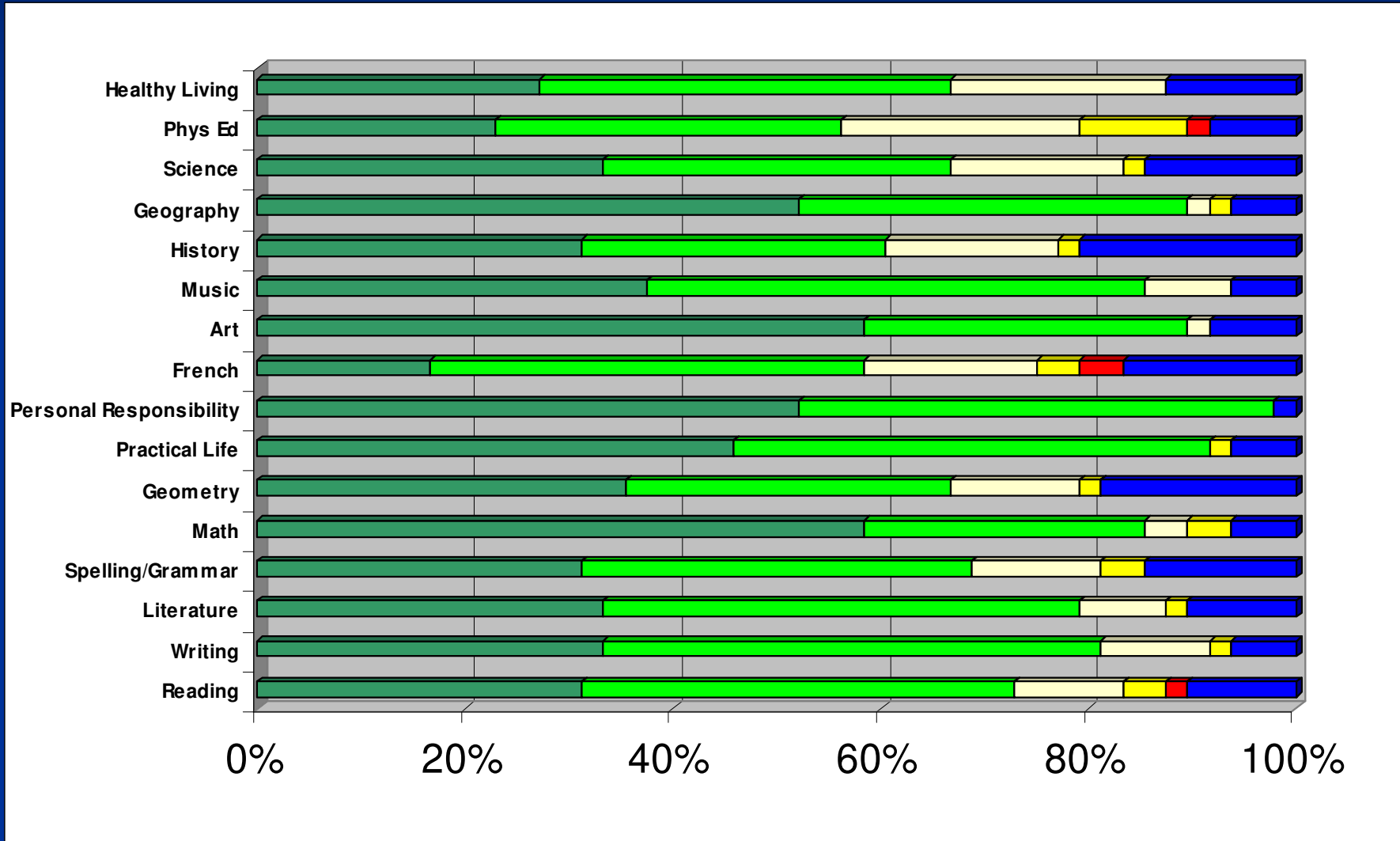
Blank (No opinion, Don't Know)

Pre = Preschool

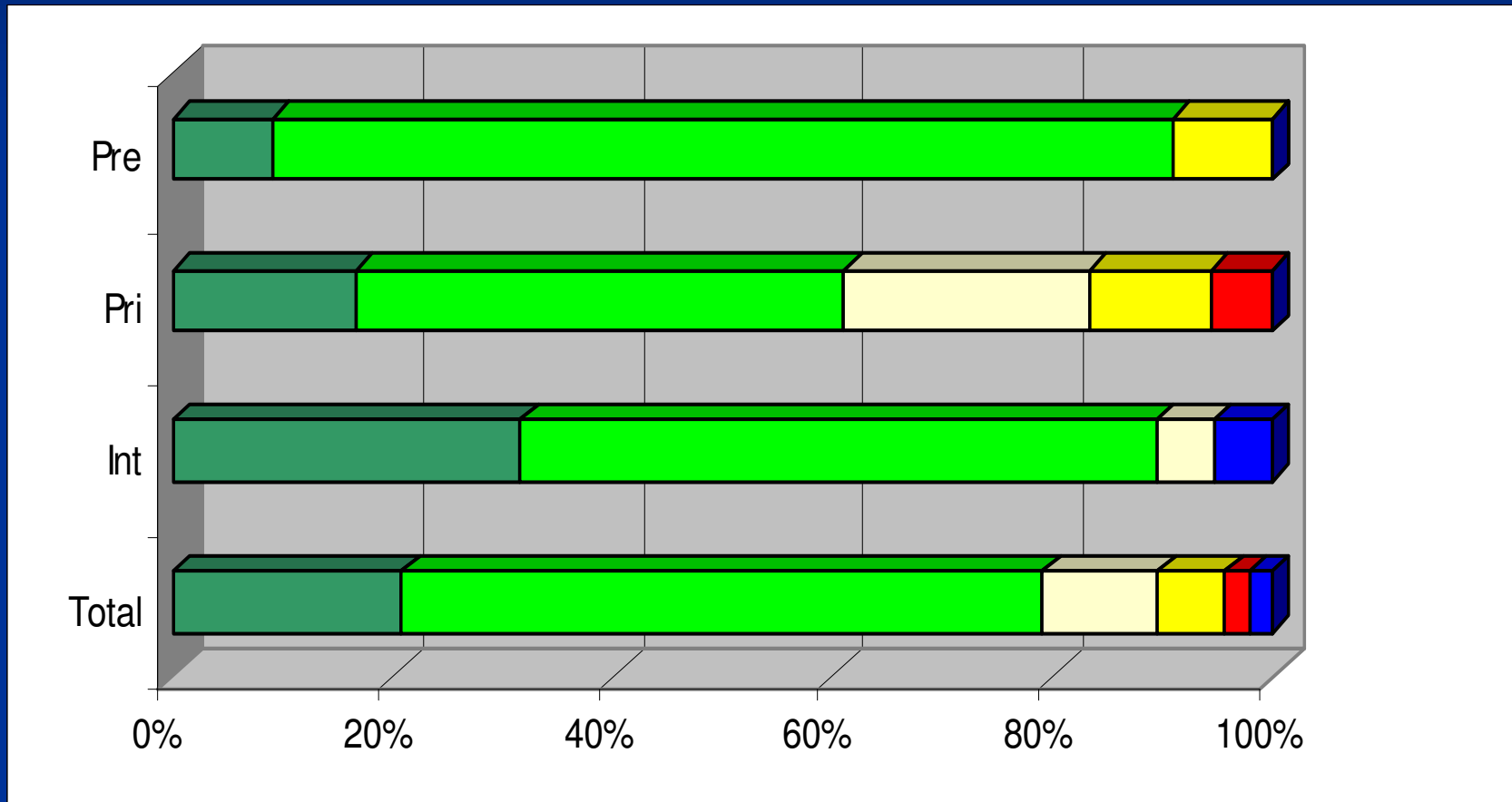
Pri = Primary Class (ages 6 to 9)

Int = Intermediate Class (ages 9-13)

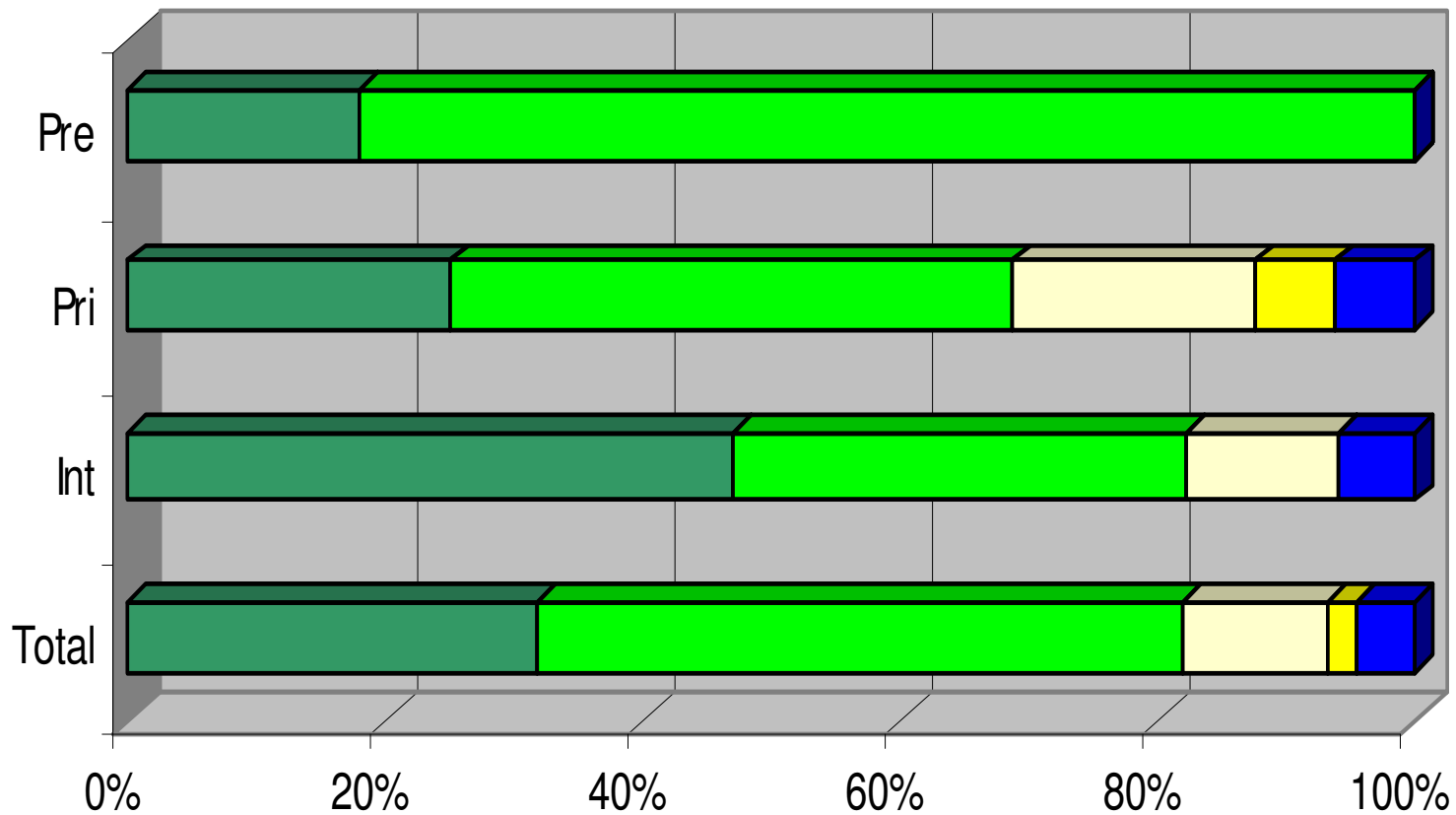
The school is meeting the academic needs of my child in:



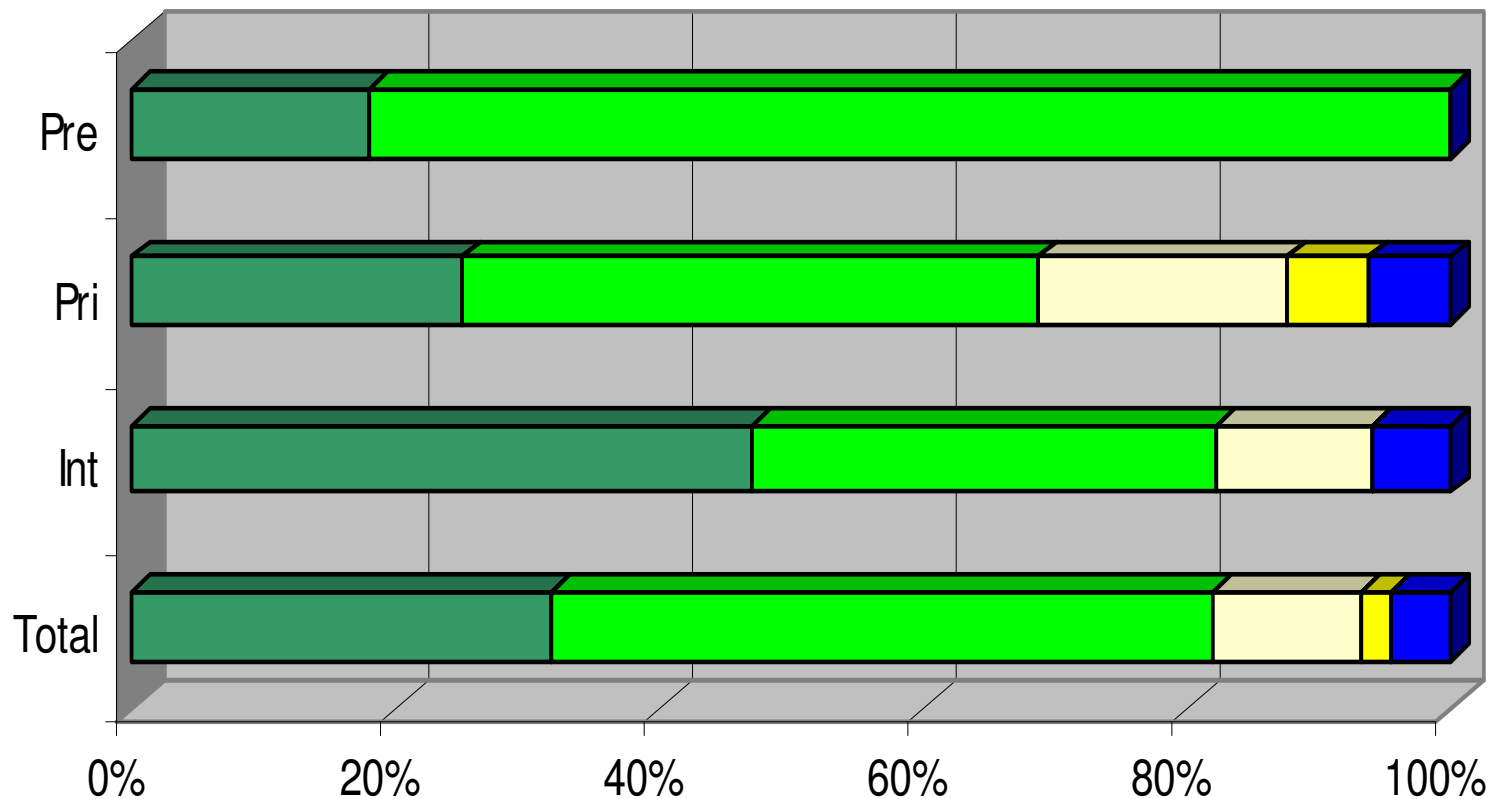
My child is given challenging work in all areas



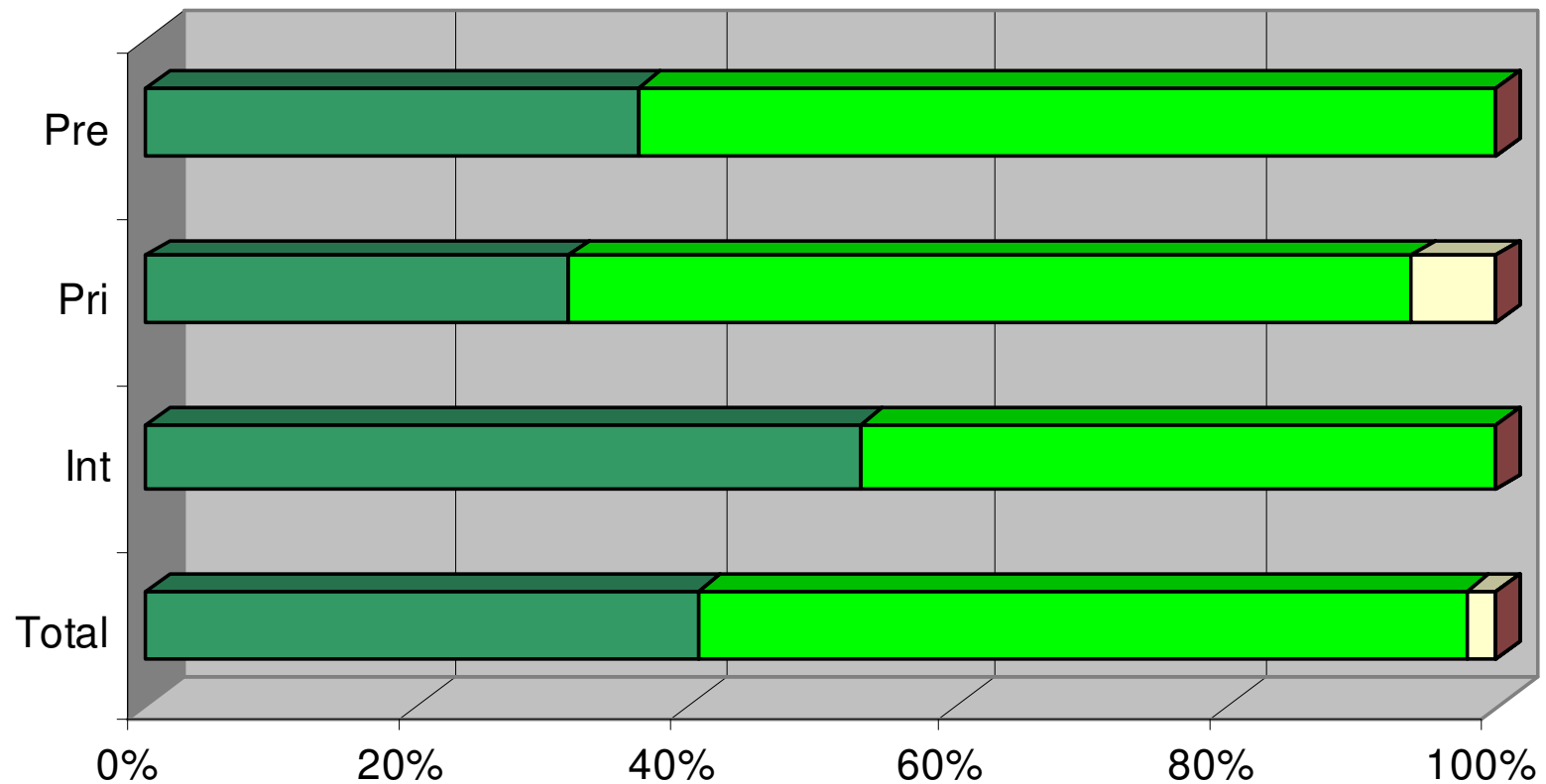
The school is teaching the subjects I think my child needs to learn



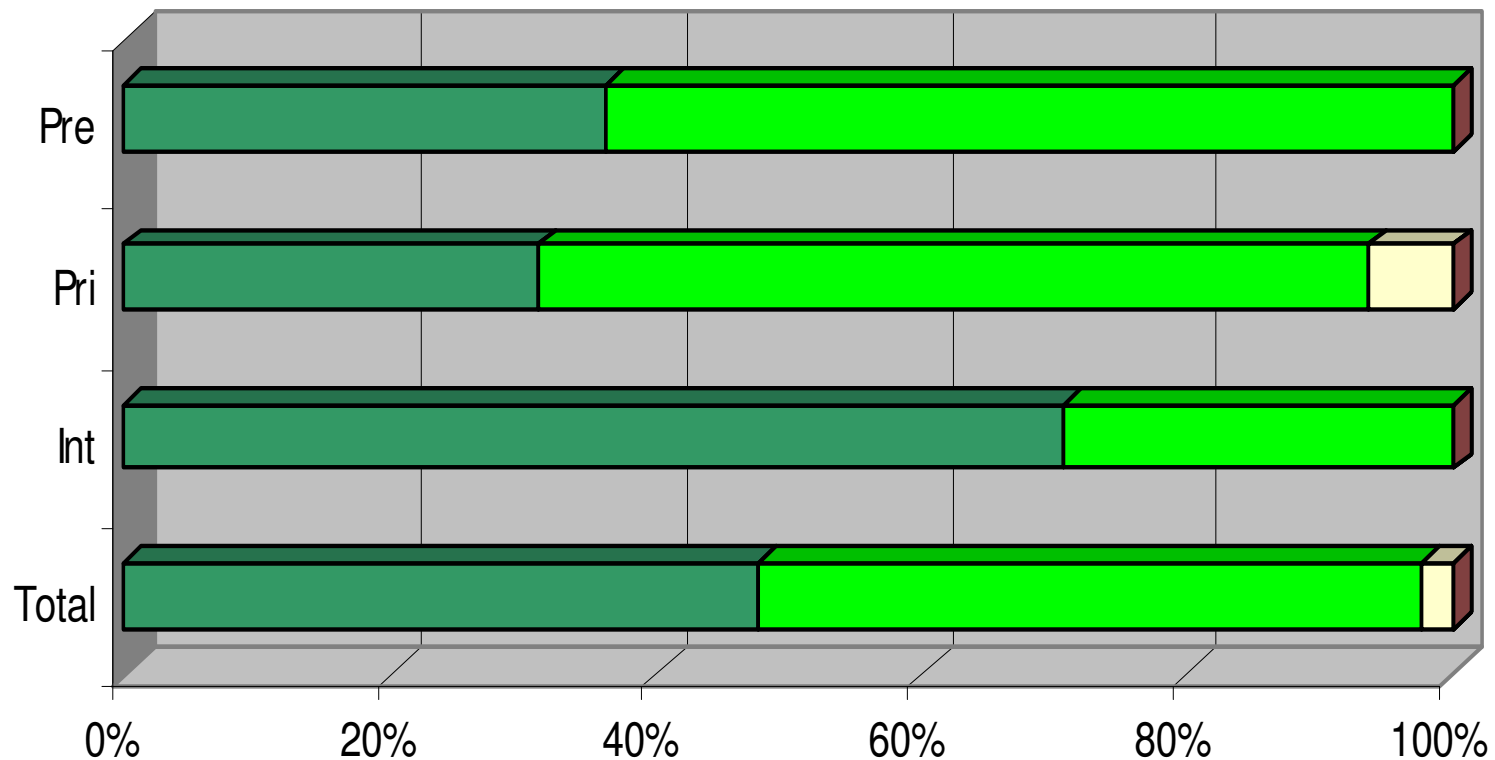
The school is preparing my child for the next stage of their education



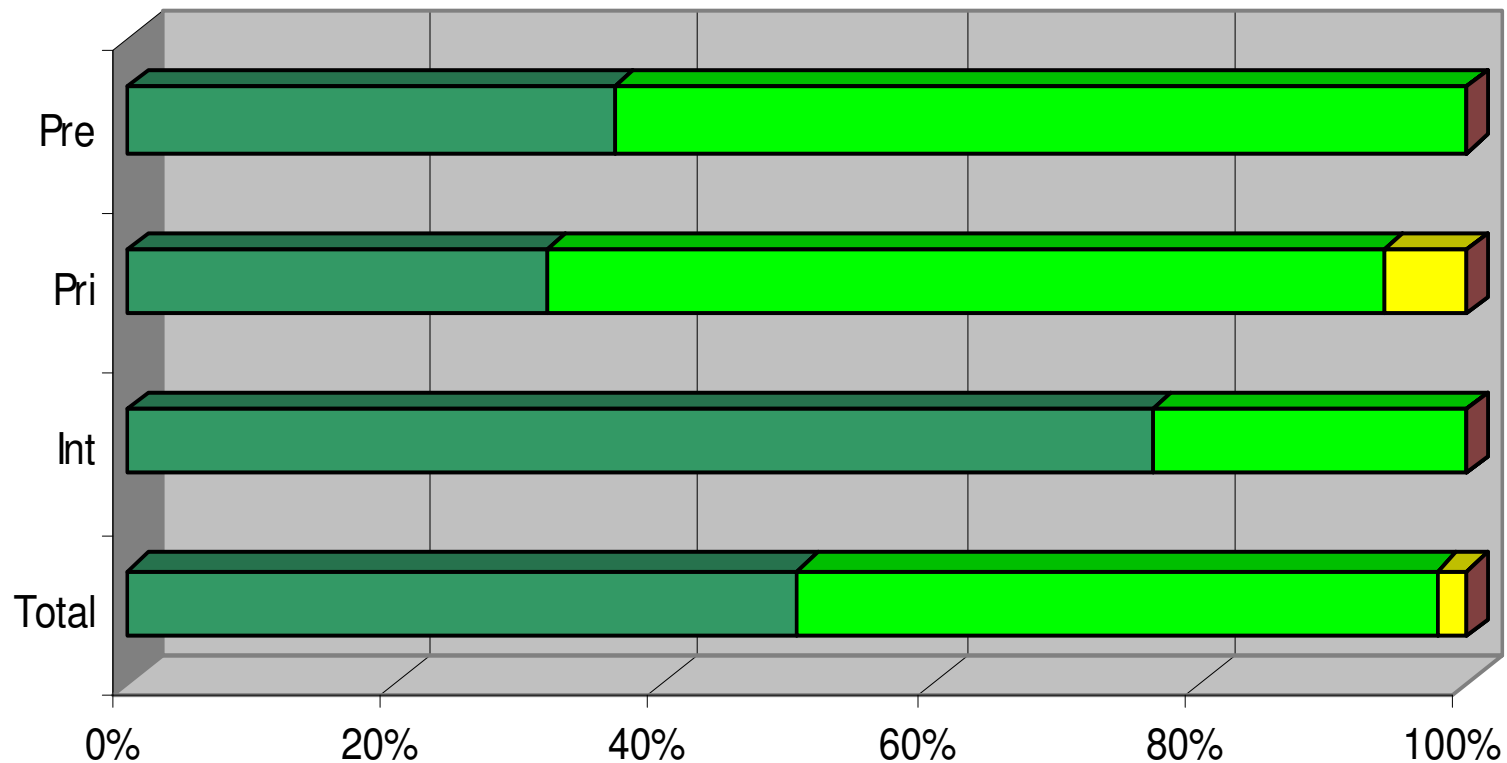
Directresses at the school provide a stimulating and challenging environment for my child



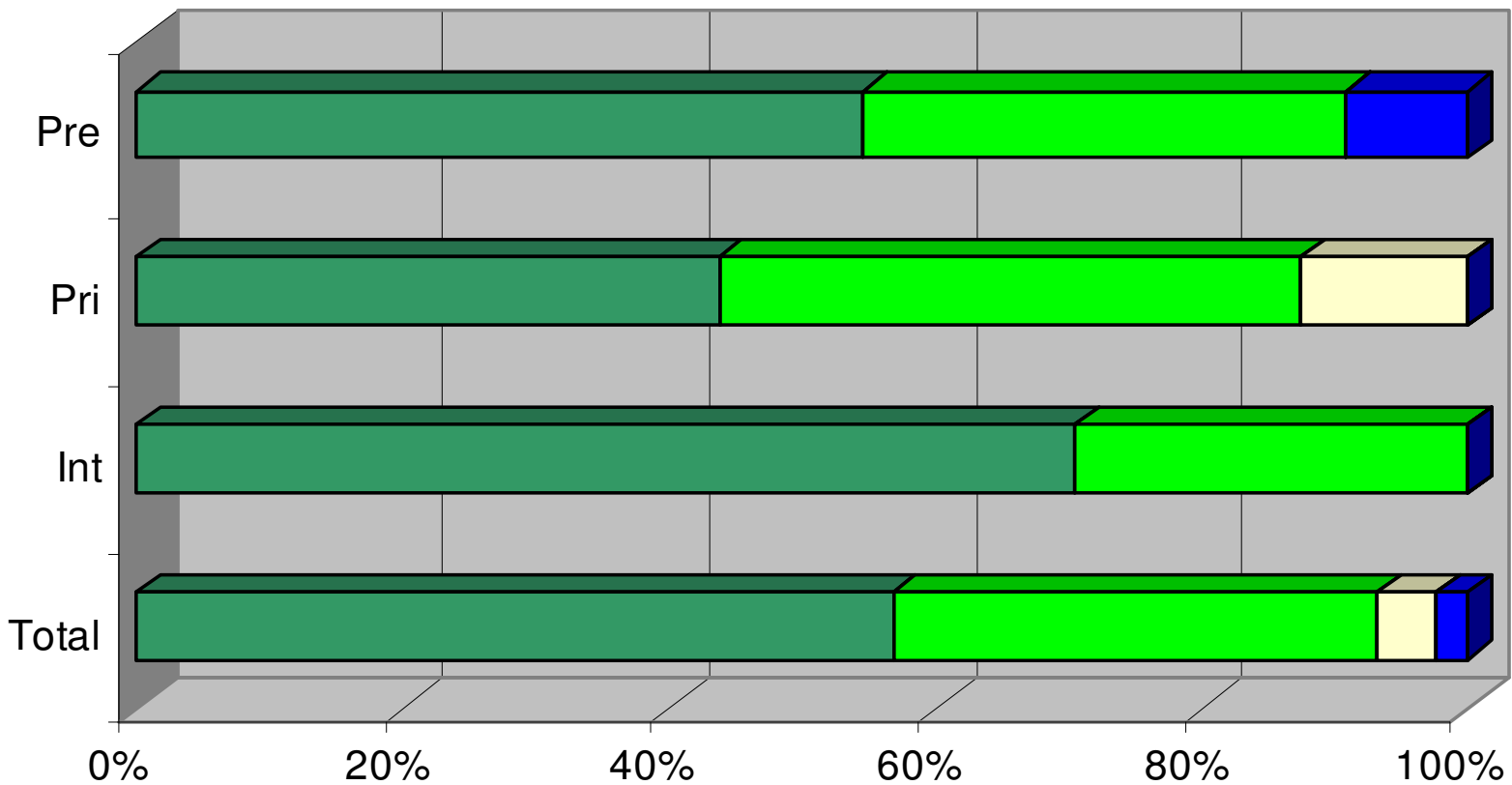
Directresses at the school expect my child to achieve to the best of their ability



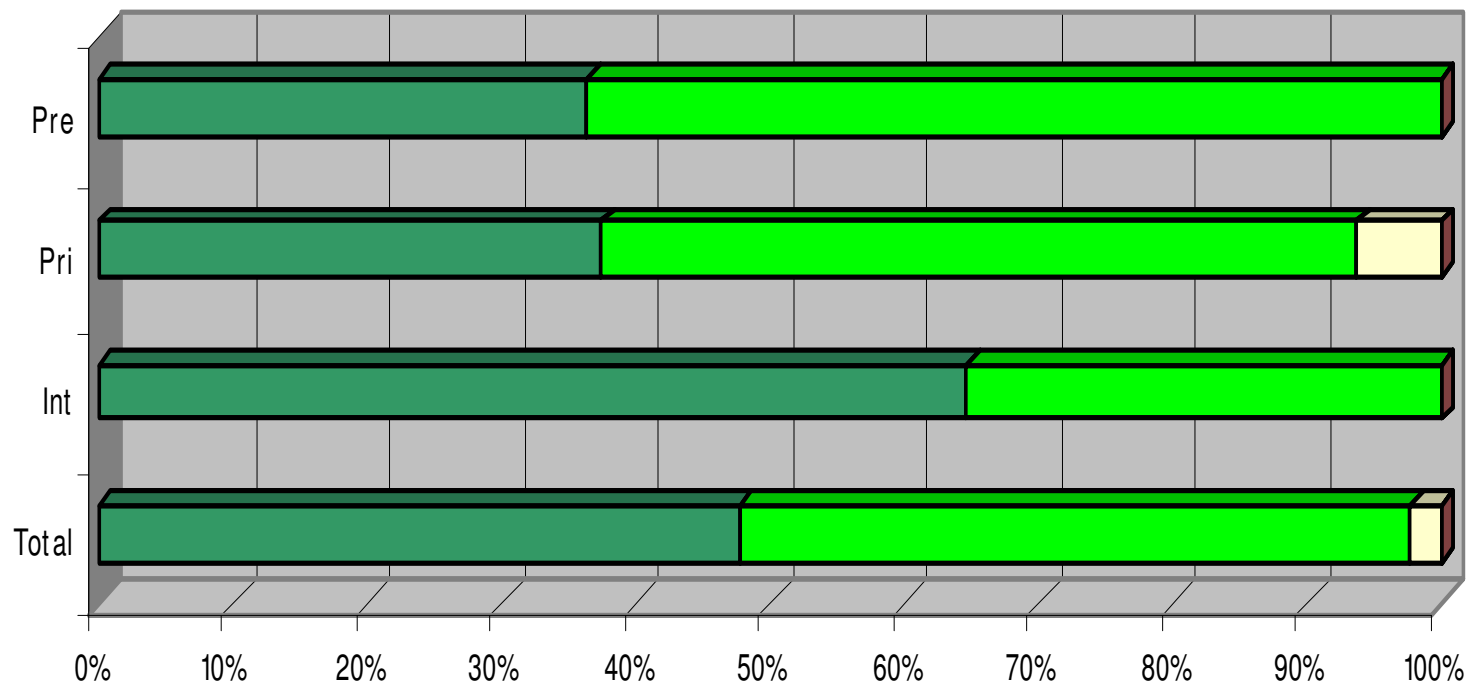
Directresses at the school motivate my child to want to learn



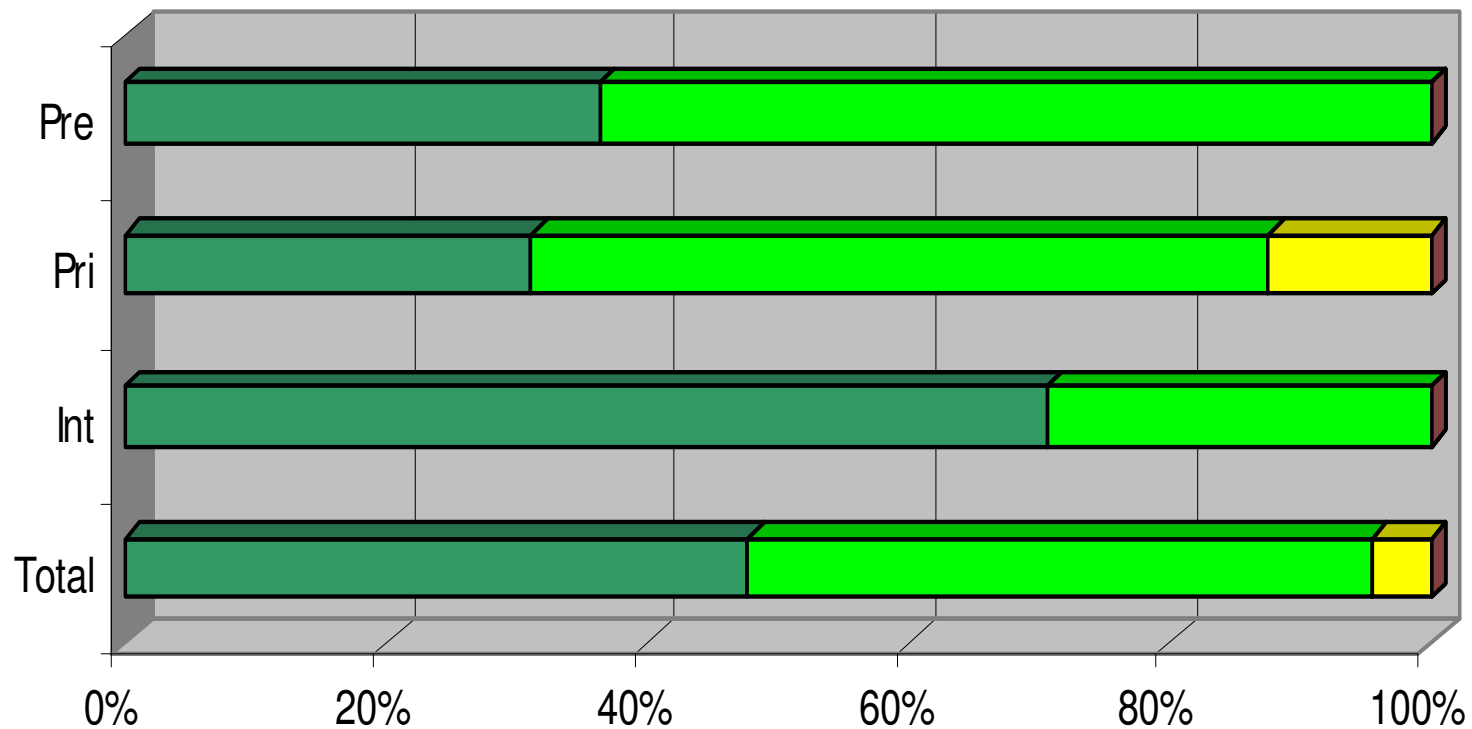
Directresses at the school are committed and enthusiastic in their approach to teaching



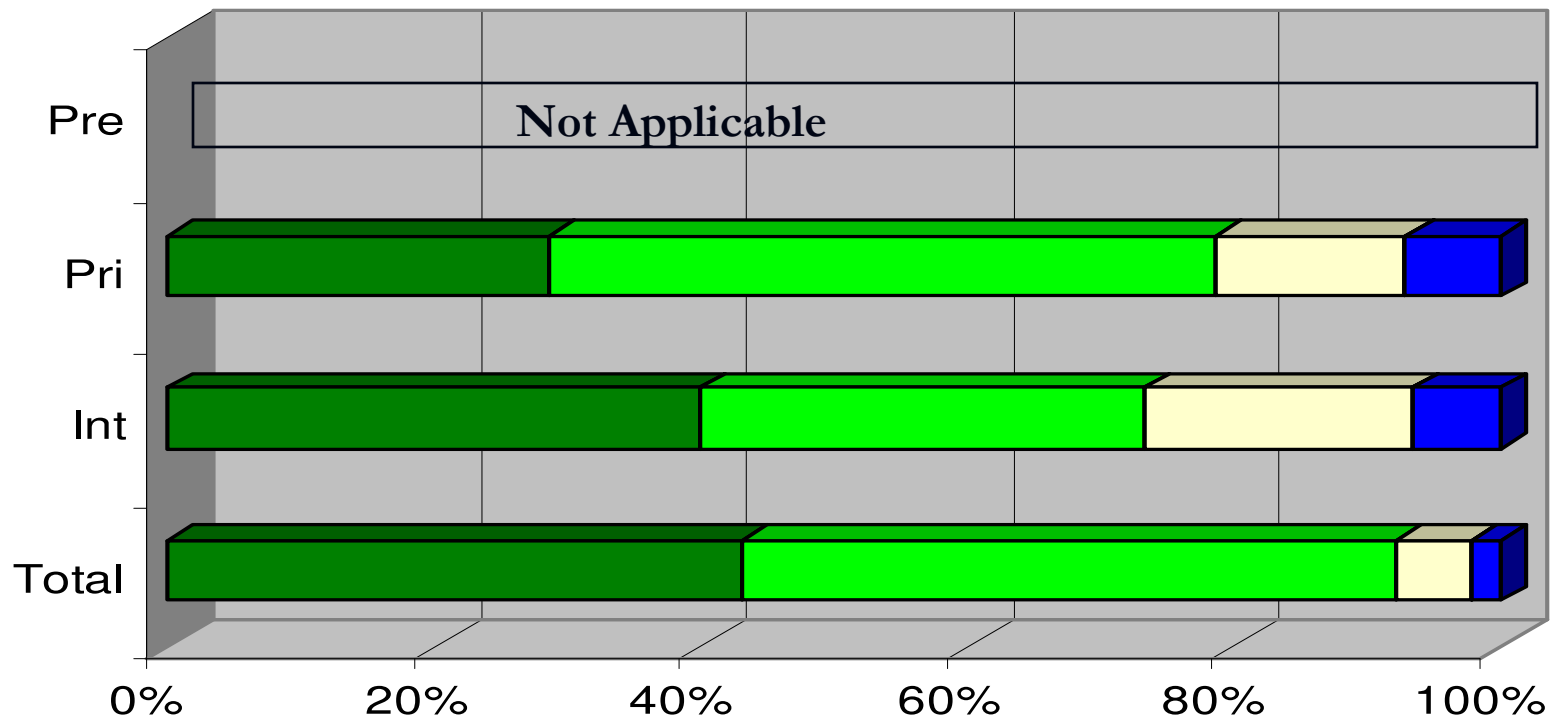
I think Directresses at the school care that my child progresses as well as they can and know what areas need to be developed



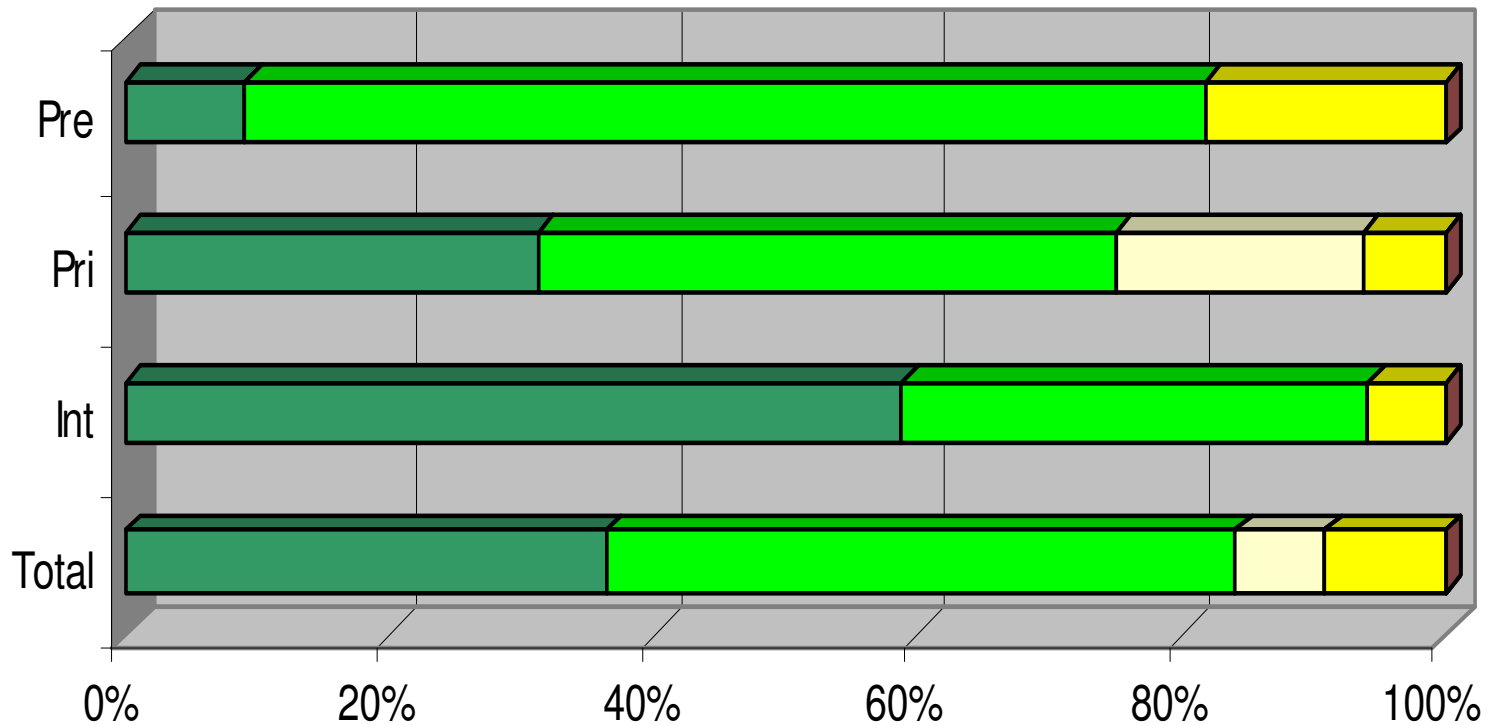
I believe my child receives high quality teaching at the school



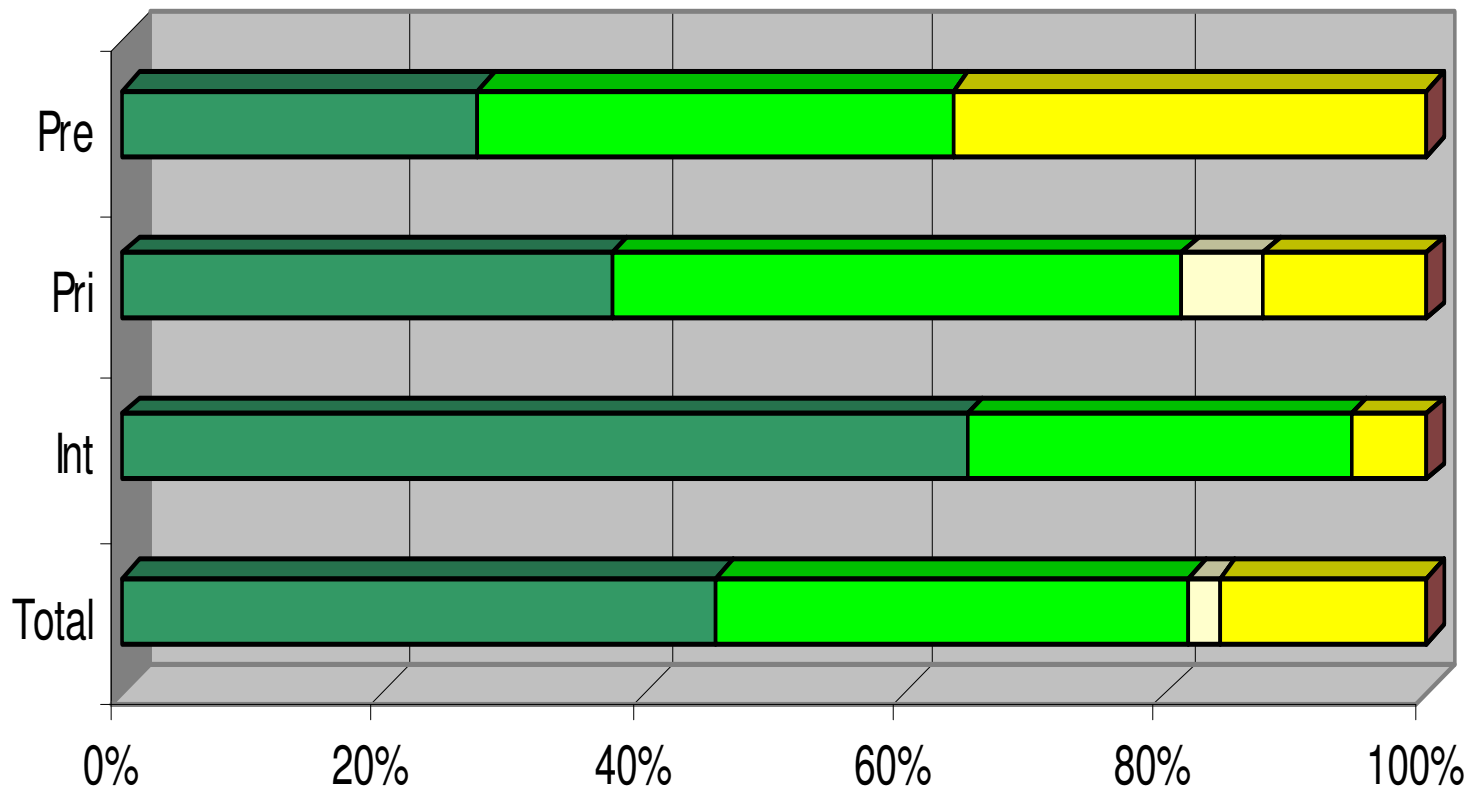
My child's reports cover all the areas of their progress that I need to know about



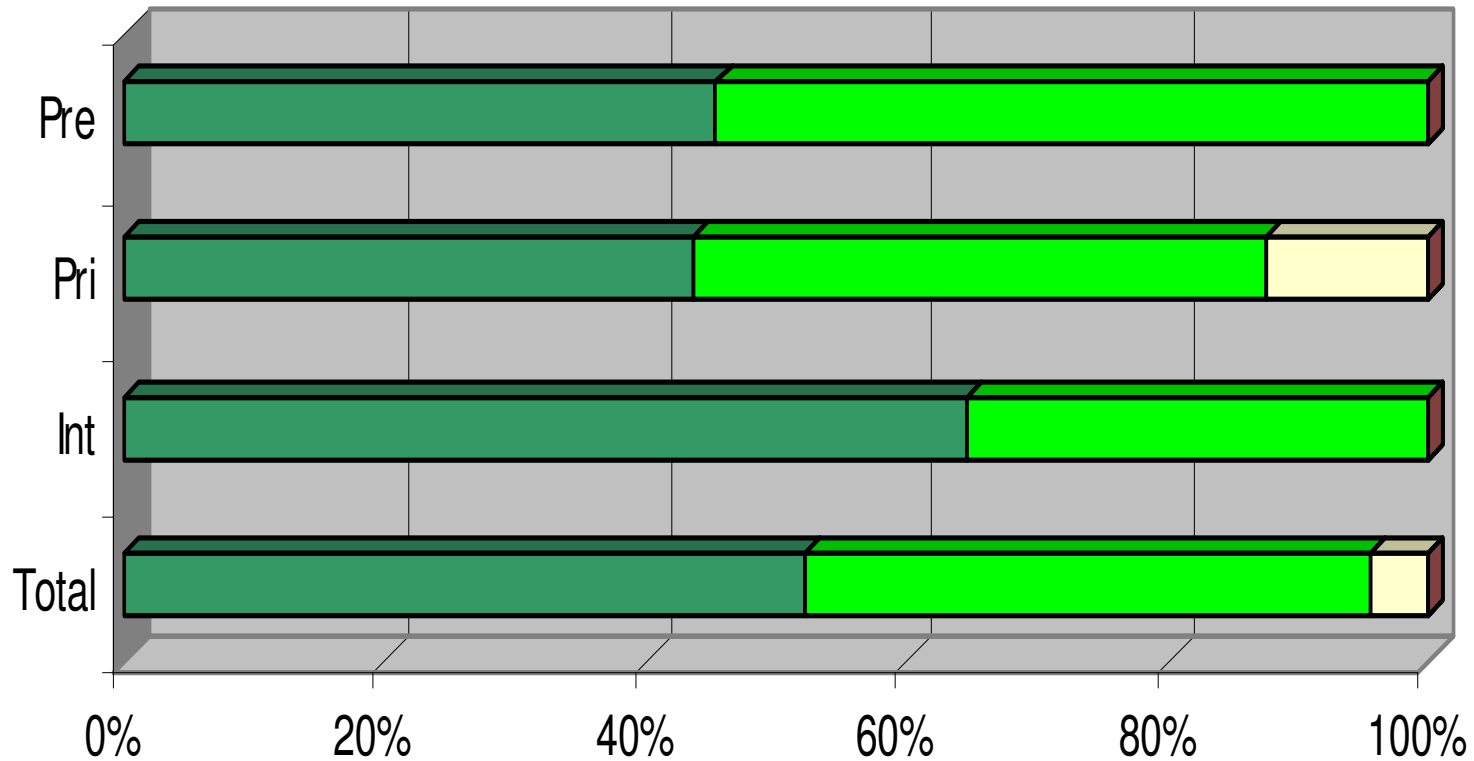
I am satisfied with the level of reporting and the Directresses' ability to describe my child's learning style, accomplishments and areas for improvement



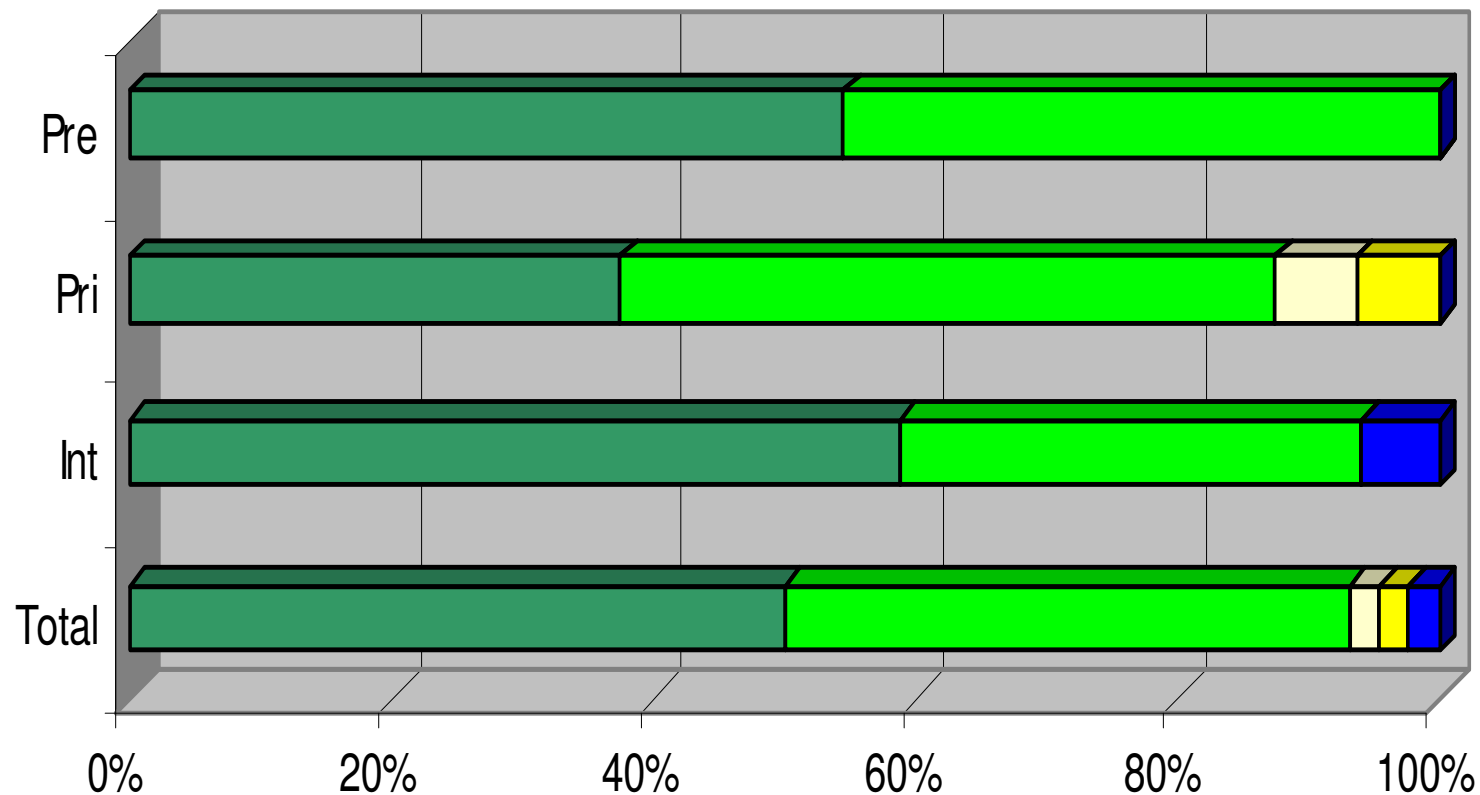
Directresses at the school keep me well informed about my child's progress (eg parent/teacher interviews, informal appointments)



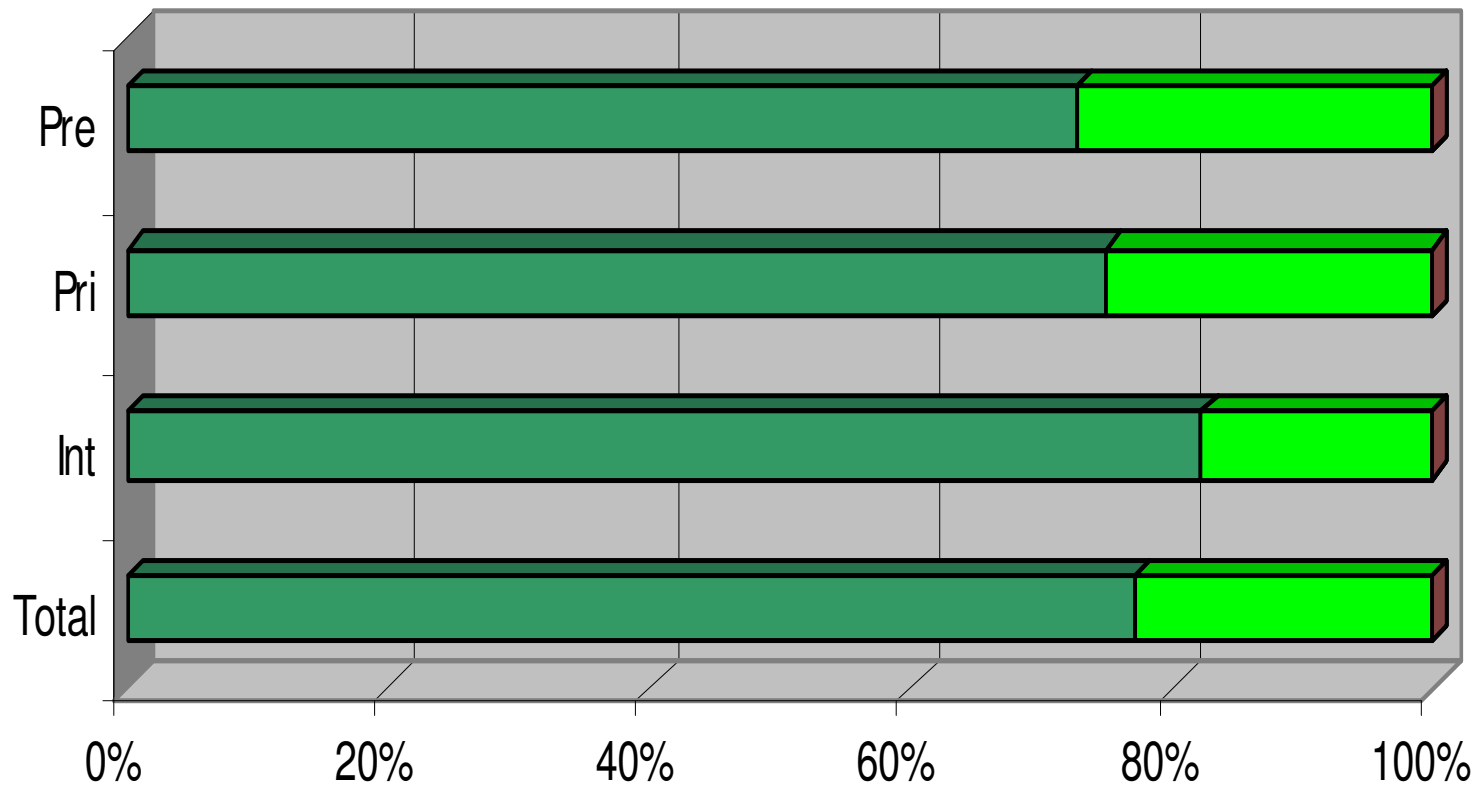
Directresses treat my child fairly and reasonably



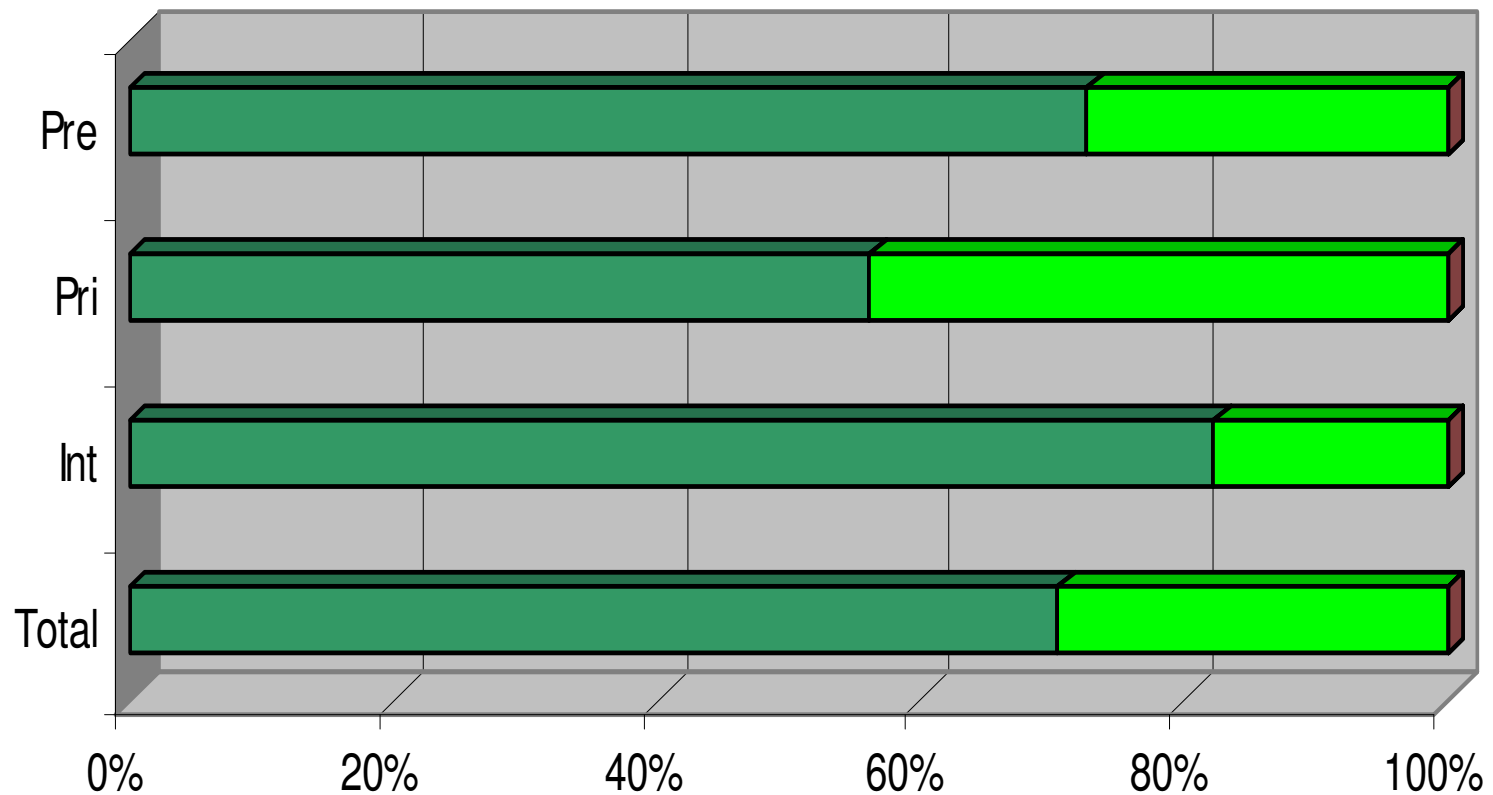
The school sets clear standards of behaviour for my child



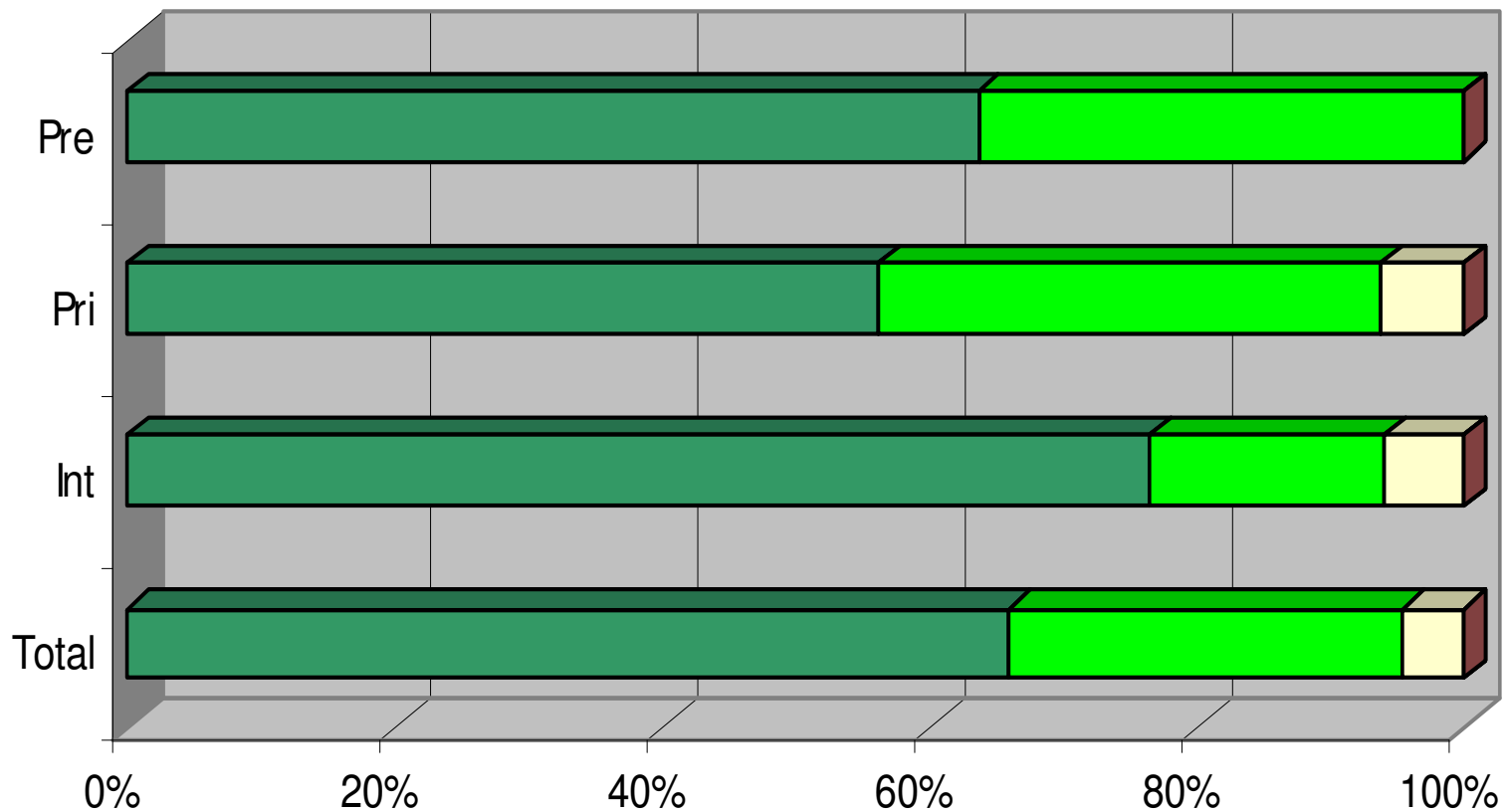
The school cares about my child



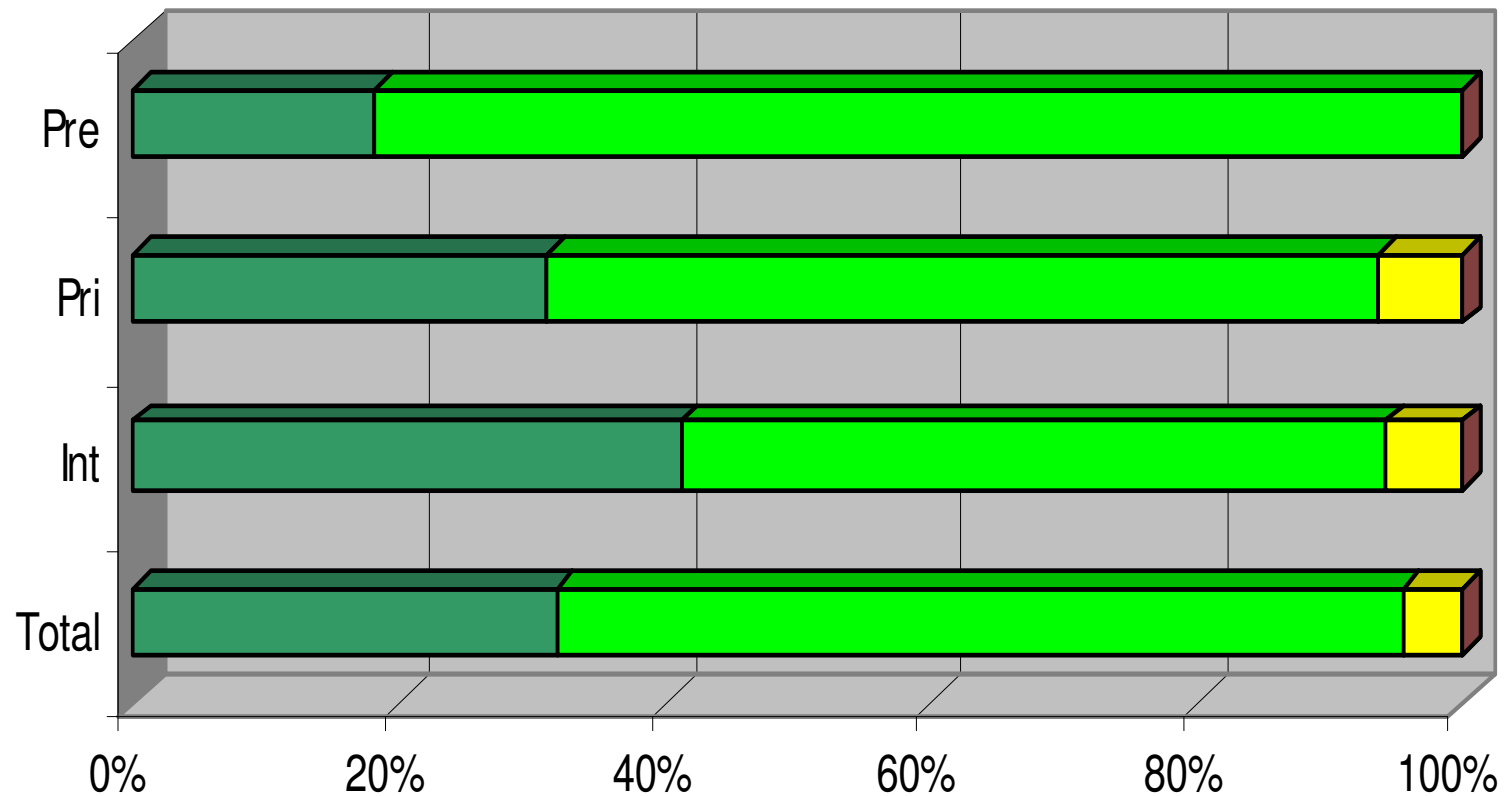
My child feels safe at the school



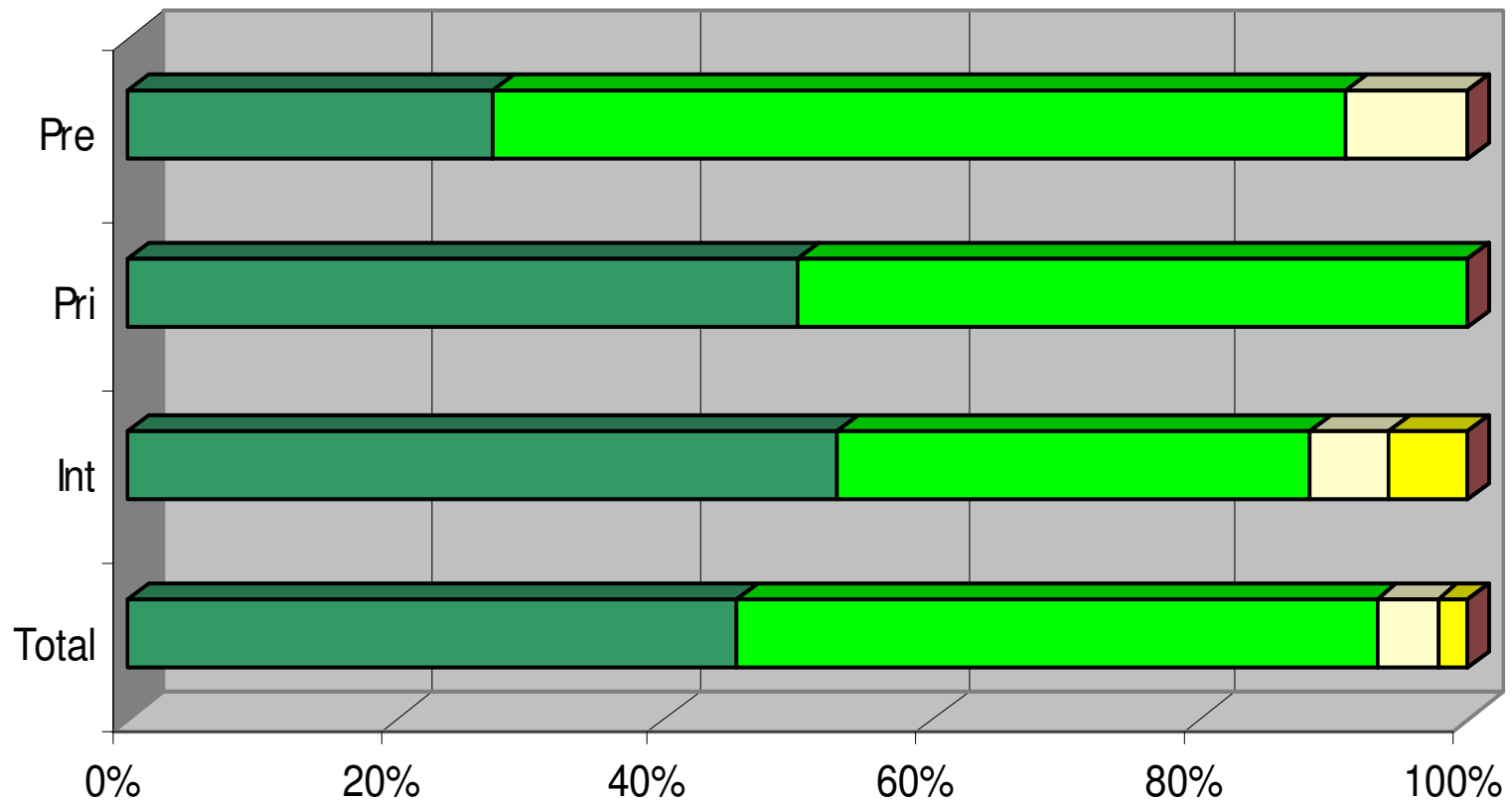
My child is happy at the school



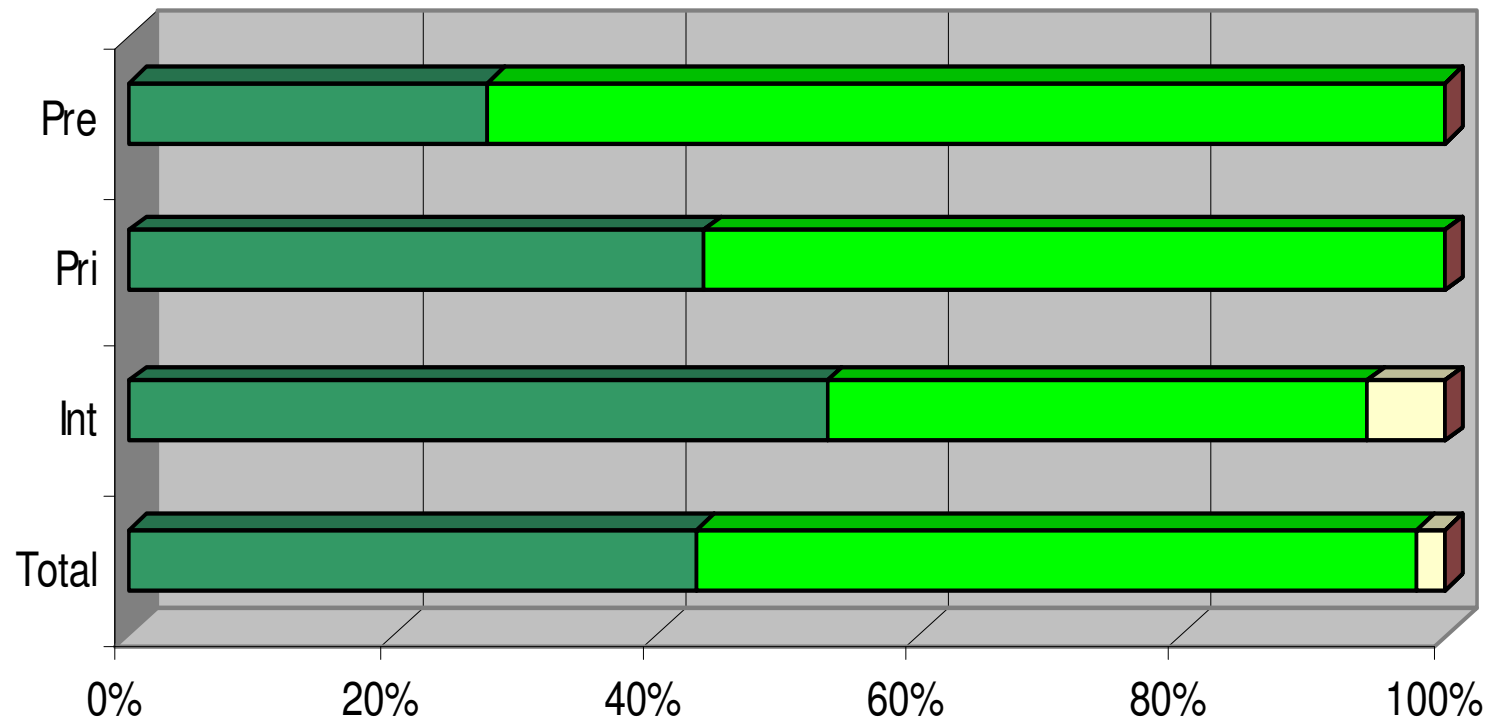
As a parent, I know how to support my child to ask for help



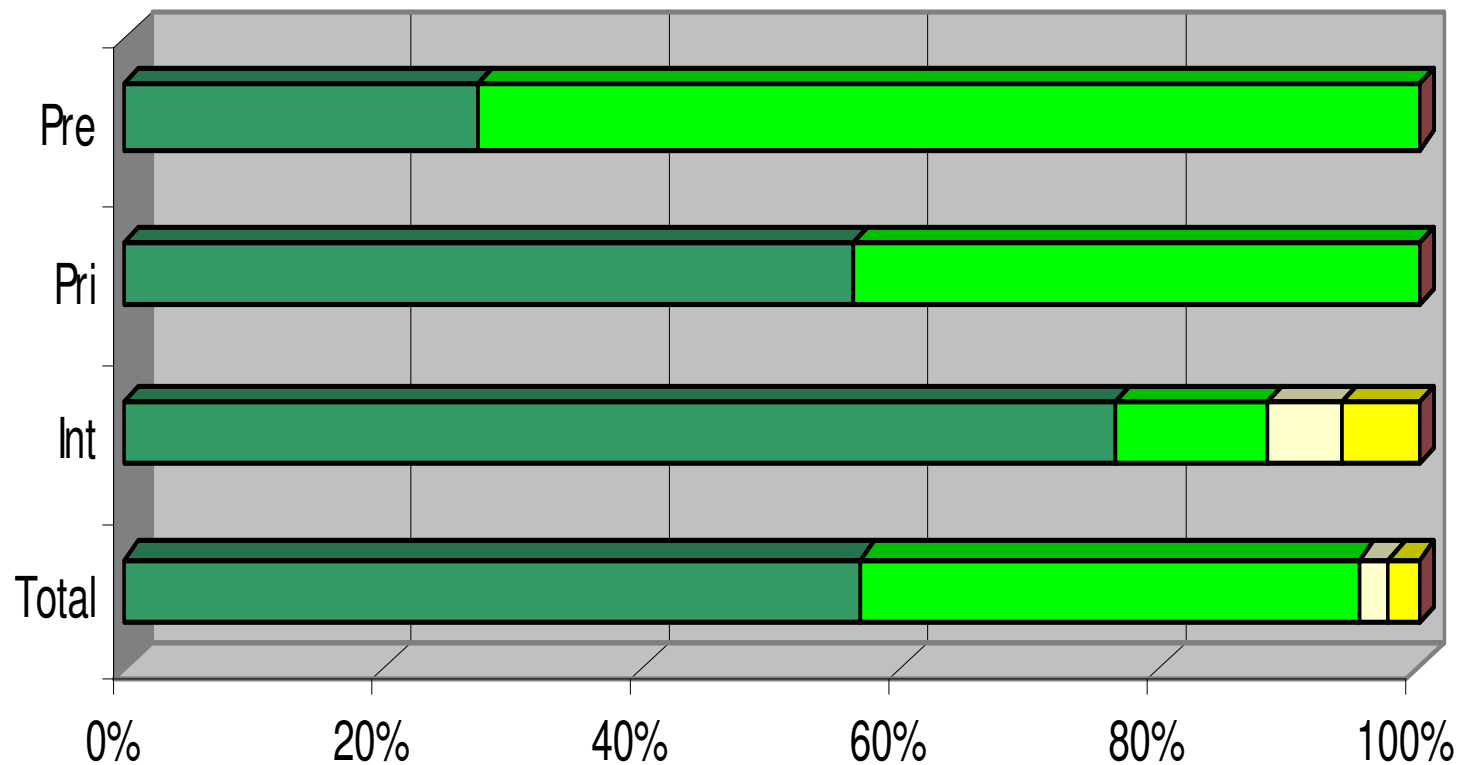
I feel I have the opportunity to be involved in school-related activities



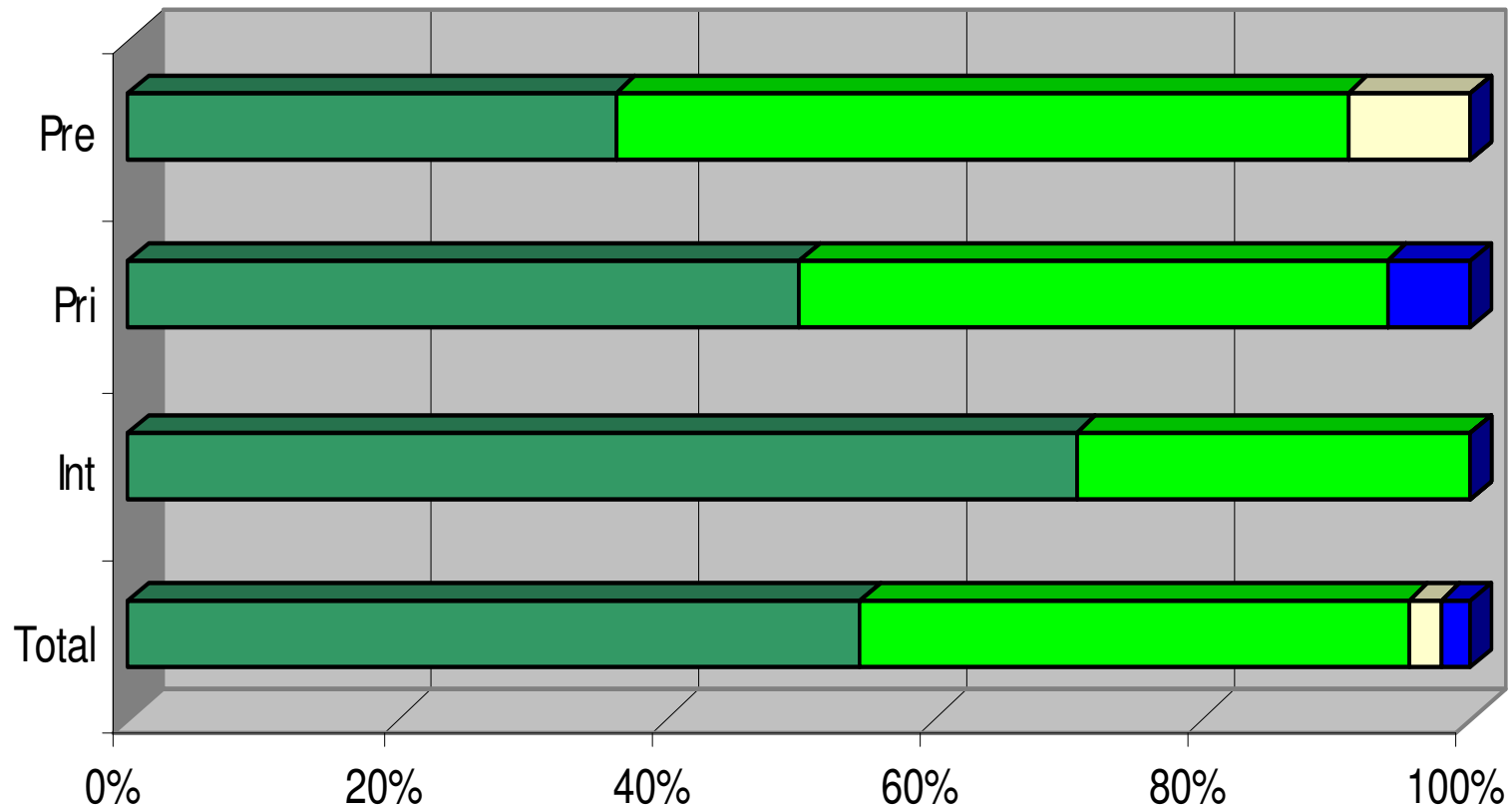
The school reaches out to parents and connects to them as partners in the education of children through conferences or parent education events



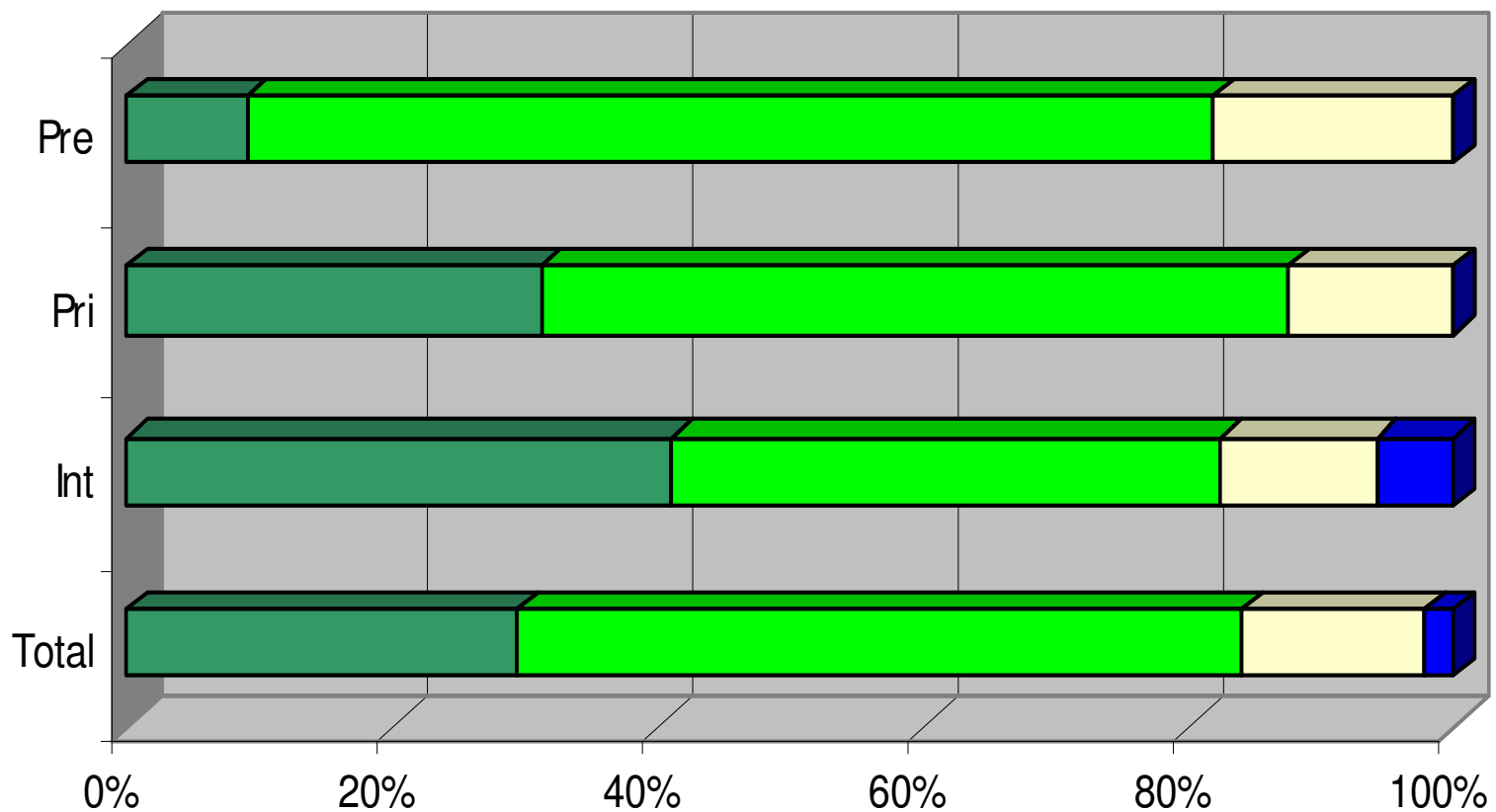
The school keeps me abreast of current activities (web, Newsletter, bulletin board, E-mail, flyers)



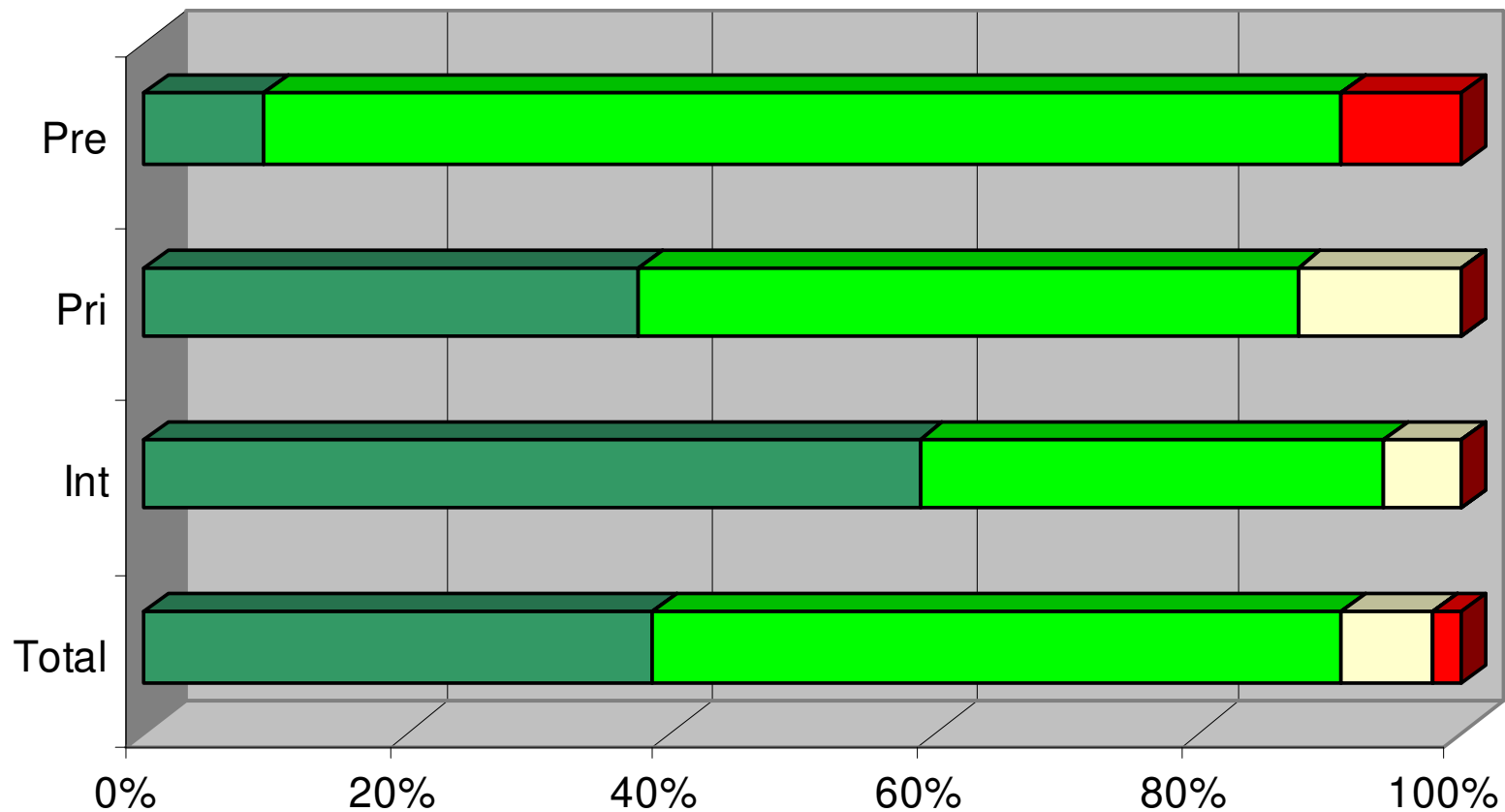
I feel that my Volunteer contributions to the school are valued



Tuition fees are at a reasonable level



There are sufficient payment options for tuition fees



The school Board and Administration give high priority to being fiscally responsible

